

Log Cabins with Cupolas—Nez Perce National Forest

There have been 20 log cabin with cupola lookouts on the Forest—only one remains, Sourdough Lookout.

Bailey Mountain

Located 9 miles NNE of Moose Creek Ranger Station

Built in 1927—10' x 10' log cabin with cupola

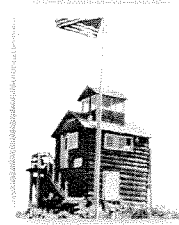


*Bailey Mountain LO, 1959
Deane Hess photo*

Bear Wallow

Located 7 miles W of Moose Creek Ranger Station

Built in 1930—two story 12' x 12' log cabin with cupola

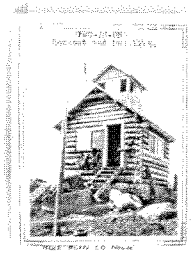


*Bear Wallow LO, 1950
USFS photo*

Black Butte

Located 22 miles ENE of Riggins

Built in 1928—log cabin with cupola



*Black Butte LO, date unknown
George V. Ring photo*

Fog Mountain

Located 15 miles WSW of Moose Creek Ranger Station

Built in 1924—log cabin with cupola



*Fog Mountain LO, 1924
Wanda Buller Collection*

Freeman Peak

Located 6 miles ENE of Moose Creek Ranger Station

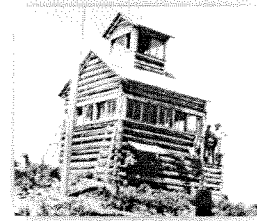
Built in 1923—log cabin with cupola



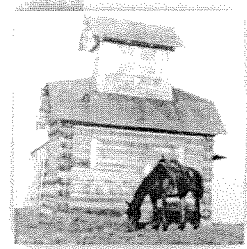
*Freeman Peak LO, date unknown
USFS photo*

Gardiner Peak

Located 13 miles SE of Moose Creek Ranger Station
Built in 1925—5' log crib cabin with cupola



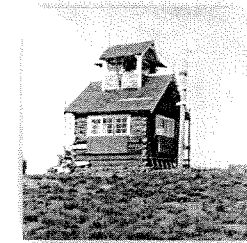
*Gardiner Peak LO, 1929
USFS photo*



*Grave Point LO, date unknown
USFS photo*

Grave Point

Located 15 miles NNW of Riggins
Built in 1924—log cabin with cupola



*Green Mountain LO, 1951
USFS photo*

Green Mountain

Located 18 miles ESE of Elk City
Built circa 1930—log cabin with cupola



*Grouse Ridge LO, no date.
Sid Poppe photo, Dick Walker*

Grouse Ridge

Located 25 miles ENE of Elk City
Built in 1928—log cabin with cupola



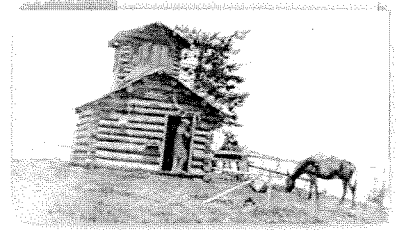
*Heaven's Gate LO, 1940
Gary Weber Collection*

Heaven's Gate

Located 9 miles SW of Riggins
Built in 1924—log cabin with cupola

Iron Mountain

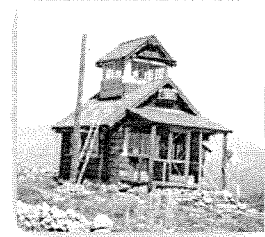
Located 11 miles NNW of Elk City
Built in 1919—log cabin with cupola



*Iron Mountain LO 1919
George V. Ring photo*

Jersey Mountain

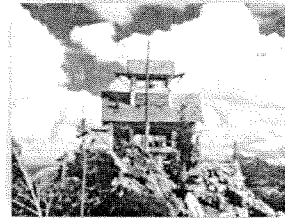
Located 24 miles SSW of Elk City
Built in 1931—log cabin with cupola
The cupola was removed sometime prior to 1955.



*Jersey Mountain LO, 1951
USFS photo*

Oregon Butte

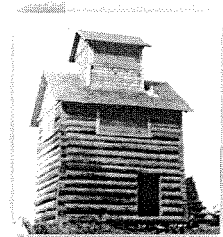
Located 24 miles SSW of Elk City
Built in 1929—log cabin with cupola



*Oregon Butte LO, 1963
USFS photo*

Puzzle Point

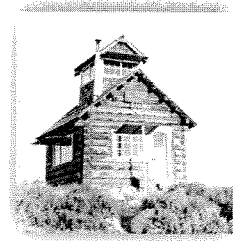
Located 3 miles SW of Moose Creek Ranger Station
Built in 1929—two-story log cabin with cupola



*Puzzle Point LO, 1929
USFS photo*

Rabbit Point

Located 23 miles S of Elk City
Built in 1930—log cabin with cupola



*Rabbit Point LO 1939
Harry Headron photo*

Sheep Hill

Located 24 miles SE of Elk City
Built in 1928—log cabin with cupola



*Sheep Hill LO, 1928
USFS photo*

Sourdough Peak

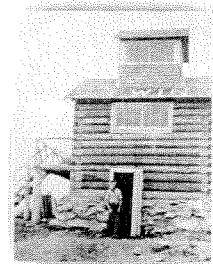
Located 20 miles SE of Grangeville
Built in 1927—15' x 15' "Nez Perce" log cabin with cupola



*Sourdough Peak LO, date unknown
USFS photo*

Twin Butte

Located 12 miles ESE of Moose Creek Ranger Station
Built in 1929—log cabin with cupola



*Twin Butte LO, date unknown
Leroy Lewis photo—Dick Walker collection*

Vermillion Peak

Located 16 miles NE of Elk City

Built in 1924—log cabin with cupola



*Vermillion Peak LO, 1929
Del Cox photo*

Wylies Peak

Located 10 miles SSW of Moose Creek Ranger Station

Built in 1925—log cabin with cupola



*Wylies Peak LO, 1925
USFS photo*

Cindy L. Schacher, Archaeological Technician